

—
**THE
BUTZ FAMILY
OF
COMPANIES**
CONSTRUCTION
MANAGER
—



Alvin H. Butz, Inc.

butz.com

840 Hamilton Street,
Suite 600, P.O. Box 509
Allentown, PA 18105
610.395.6871

SHOEMAKER

**Shoemaker
Construction Co.**

shoemakerco.com
One Tower Bridge,
Suite 1300, P.O. Box 888
West Conshohocken,
PA 19428
610.941.5500

ALEXANDER

**Alexander Building
Construction Co.**

alexanderbuilding.com
315 Vaughn Street
Harrisburg, PA 17110
717.234.7041

2545 North Atherton Street
State College, PA 16803
814.237.6059

EXPERIENCE

NCE



The Butz Family of companies, Alvin H. Butz, Inc., Shoemaker Construction Co. and Alexander Building Construction Co., provides exceptional, comprehensive construction management services, led by strong values and one goal—your complete satisfaction.

ALVIN H. BUTZ, INC.

Founded in 1920

SHOEMAKER CONSTRUCTION CO.

Founded in 1944

ALEXANDER BUILDING CONSTRUCTION CO.

Founded in 1928

Financial Center | Kish Bank | HP Architects



“We would definitely utilize Butz again; they set the gold standard on everything they touch.”

JOHN SLOWIK, VICE PRESIDENT,
GOVERNMENT/REGULATION
COMPLIANCE, OLYMPUS AMERICA, INC.

Corporate Headquarters for the Americas
Olympus Corporation of the Americas
EwingCole

“Alexander’s ability to execute while attending to our priorities was exceptional, and they did it while minimizing costs, driving schedule, and producing the level of quality we demanded.”

GREGORY HAYES, VICE PRESIDENT, KISH BANK

REPUTATION



Greg Butz
PRESIDENT & CEO



Lee Butz
CHAIRMAN



Alvin H. Butz
FOUNDER



Our success and longevity stem from our tireless pursuit of integrity, dedication, improvement and professionalism and our unparalleled record for quality, speed, safety and value.

“Even though the opening season has come and gone, Butz personnel are still on the job attending to each and every detail. Those folks don’t leave until every last issue is resolved and they don’t make excuses. They do whatever it takes to complete a project successfully.”

GLENN SOLT, CAPITAL PROJECTS DIRECTOR, COUNTY OF LEHIGH

“Throughout the process the Butz people were talented, experienced and totally dedicated. Their teamwork with Lehigh County, the design firms and us was crucial to the success of the project.”

CRAIG STEIN, PRESIDENT, LEHIGH VALLEY IRONPIGS

Coca-Cola Park | AAA Baseball Stadium County of Lehigh
HOK Sports Facilities Group, LLC



Sands Casino
Resort Bethlehem
Sands Bethworks
Gaming LLC
RTKL Associates, Inc.

REACH

Serving central and eastern Pennsylvania, New Jersey and northern Delaware, we are consistently ranked among the nation's Top 100 Construction Managers.

- LEHIGH VALLEY
Alvin H. Butz, Inc.
- GREATER PHILADELPHIA
Shoemaker Construction Co.
- HARRISBURG
Alexander Building Construction Co.
- STATE COLLEGE
Alexander Building Construction Co.



DEPTH

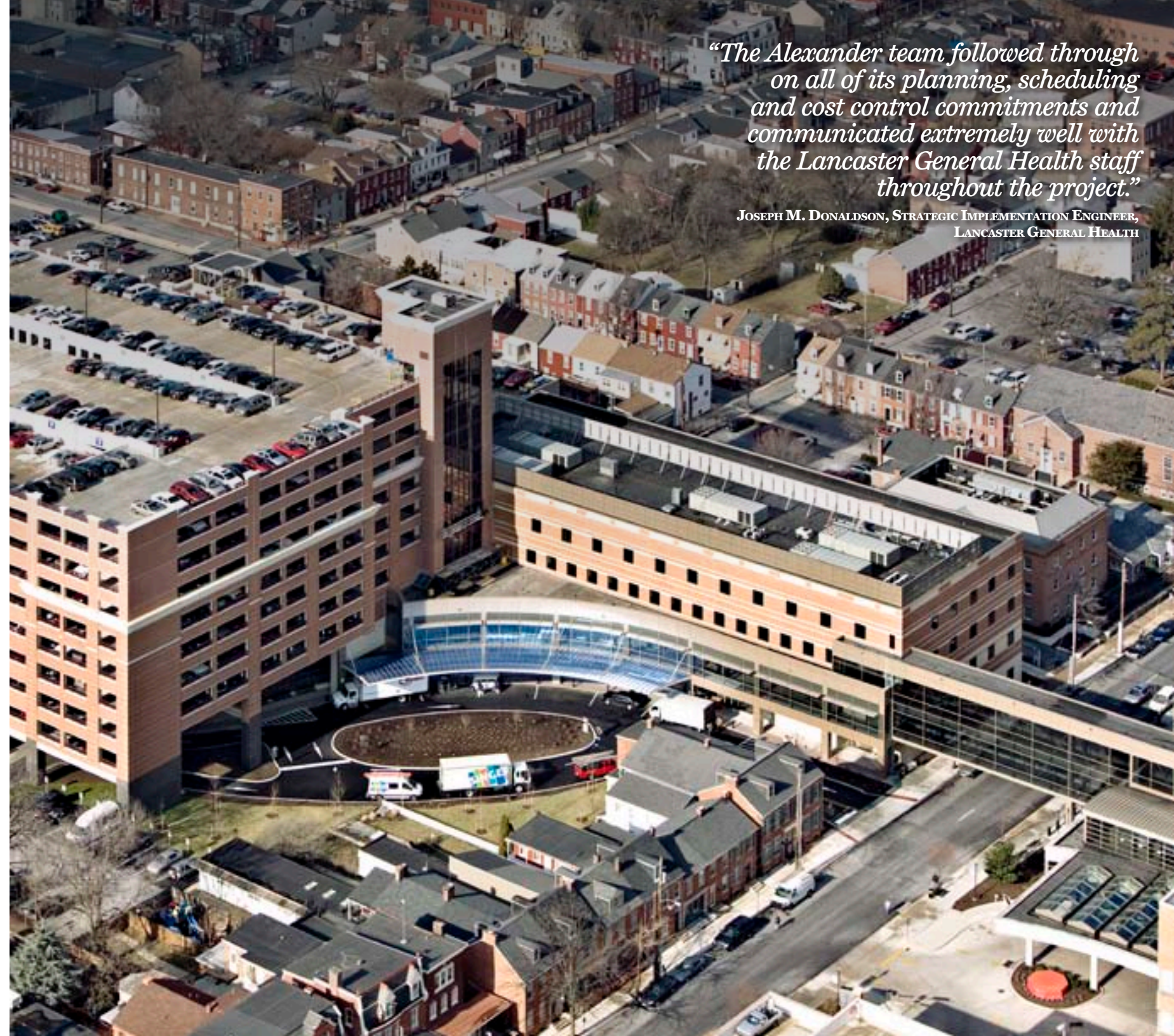
Our team includes more than 170 talented professionals with billions of dollars in construction management experience and expertise specific to the industries we serve.



Cafeteria | University Center DeSales University | *Breslin Ridyard Fadero Architects*

Duke Street Medical Building & Queen Street Parking Garage | Lancaster General Hospital
Walker Parking Consultants/MM Architects & RPA Design

Hybrid Catheterization Lab | A.I. duPont Children's Hospital | *Array Healthcare Facilities Solutions*



"The Alexander team followed through on all of its planning, scheduling and cost control commitments and communicated extremely well with the Lancaster General Health staff throughout the project."

JOSEPH M. DONALDSON, STRATEGIC IMPLEMENTATION ENGINEER,
LANCASTER GENERAL HEALTH



- Healthcare
- Higher Education
- Hi-Tech
- Corporate
- R & D
- Sustainable/LEED
- Entertainment
- Sports & Recreation
- Hospitality
- Industrial
- K-12 Education
- Retail
- Parking Structures
- Government
- Historic Restoration

Beaver Stadium Expansion
Pennsylvania State University
HOK Sports Facilities Group, LLC

BEAVER

DISTINCTION

College Row at Franklin & Marshall College
Campus Apartments, Inc.
Elkus Manfredi Architects

Our highly credentialed staff includes construction managers who are trained and certified by the Construction Management Association of America.

Linderman Library | Lehigh University | MGA Partners



“Because of its historic architecture and rare book collections, Linderman Library required exquisite attention to detail mechanically, architecturally and structurally. Butz is the firm I felt most comfortable entrusting the project to.”

ANTHONY CORALLO, ASSOCIATE VP/FACILITIES SERVICES & CAMPUS PLANNING, LEHIGH UNIVERSITY

“Alexander made many positive contributions to control project costs. Project costs have been reported openly and accurately during all phases of the project and we completed the project within our initially established budget.”

**BILL GLADISH, DIRECTOR OF CONSTRUCTION,
GEISINGER HEALTH SYSTEM**



GREEN



Proactive in employing professionals accredited by LEED (Leadership in Energy and Environmental Design), we are consistently ranked among the nation's Top 100 Green Contractors.



Douglas B. Gardner '83
Integrated Athletic Center
Haverford College
Bohlin Cywinski Jackson

INNOVATION

Injection Molding and Original Equipment
Manufacturing Additions | B. Braun Medical, Inc.
Francis Cauffman

We are industry leaders in enterprise technology and resource innovation, having provided owners with virtual construction solutions—such as Building Information Modeling, project Web sites and electronic correspondence and management systems—for more than 10 years.

Batch Injection Molding Machines | B. Braun Medical, Inc. | *Francis Cauffman*



“Butz was selected as our partner due to the unique approach they presented to the project. The work of all the trades and installation of owner items were modeled in 3-D prior to construction. This enabled the project to be delivered on scope, on time, and under budget.”

**NATE BONAR, PMP, PROJECT MANAGER,
B. BRAUN MEDICAL, INC.**

Alumni Hall Parking Structure
and Arrival Court | Lehigh University
Bohlin Cywinski Jackson

“Together with the historic Alumni Memorial Building, this parking pavilion forms the first impression of Lehigh for prospective students and visitors. It had to be done right. We knew Alvin H. Butz, Inc. would provide us with the quality we needed.”

ANTHONY CORALLO, ASSOCIATE VP/FACILITIES SERVICES & CAMPUS PLANNING, LEHIGH UNIVERSITY

ADVANTAGE

“The level of respect between Butz and local subcontractors is unparalleled. I now understand why Butz is always able to deliver buildings on time and under budget.”

RANCE BLOCK, BUILDING STEERING COMMITTEE CHAIRMAN, TEMPLE BETH EL



Synagogue | Temple Beth El | Levin Brown Associates, Inc.

Our unique and carefully refined approach to construction management takes teamwork to a higher level. Our partnering services focus your project's team on specific goals prior to construction, so your results are accomplished more quickly, more economically and more remarkably.

Kanbar Campus Center and Parking Garage | Philadelphia University
Shepley Bulfinch Richardson & Abbott



aloft Philadelphia Airport
Starwood Hotels and Resorts Worldwide
Milton Pate Architects



SUCCESS

“Shoemaker helped us deliver a comprehensive, credible development success story while keeping an eye on our critical opening day deadline as well as cost containment to maintain investment returns. Their consistent coordinated performance paid off in a significant asset to the Starwood portfolio.”

**SCOTT THRUN,
VICE PRESIDENT,
DEVELOPMENT
STARWOOD HOTELS
AND RESORTS**

Our long list of repeat clients is the best indicator of our success. Satisfied customers return to us over and over because we never let them down.

Health and Technology Center and Parking Structure | Good Shepherd Rehabilitation Network | Cope Linder Architects



STANDARDS

“The construction of this project was notable, not only for the quality of the work, but for the quality of the process. Rarely does a building get constructed with so few problems along the way. We were fortunate that Butz was selected as the construction manager and we would be delighted to work with them again.”

**JONATHAN FISHMAN, AIA, PRINCIPAL,
RICHTER CORNBROOKS GRIBBLE, INC.**

Lehigh Valley Heritage Museum | Lehigh County Historical Society



Green construction, cost control, early procurement, and financial reporting are among the many other areas where we have pioneered advancements for our customers.

Aqua Garden | The Lodge at Woodloch | Cooper Carry & Associates



